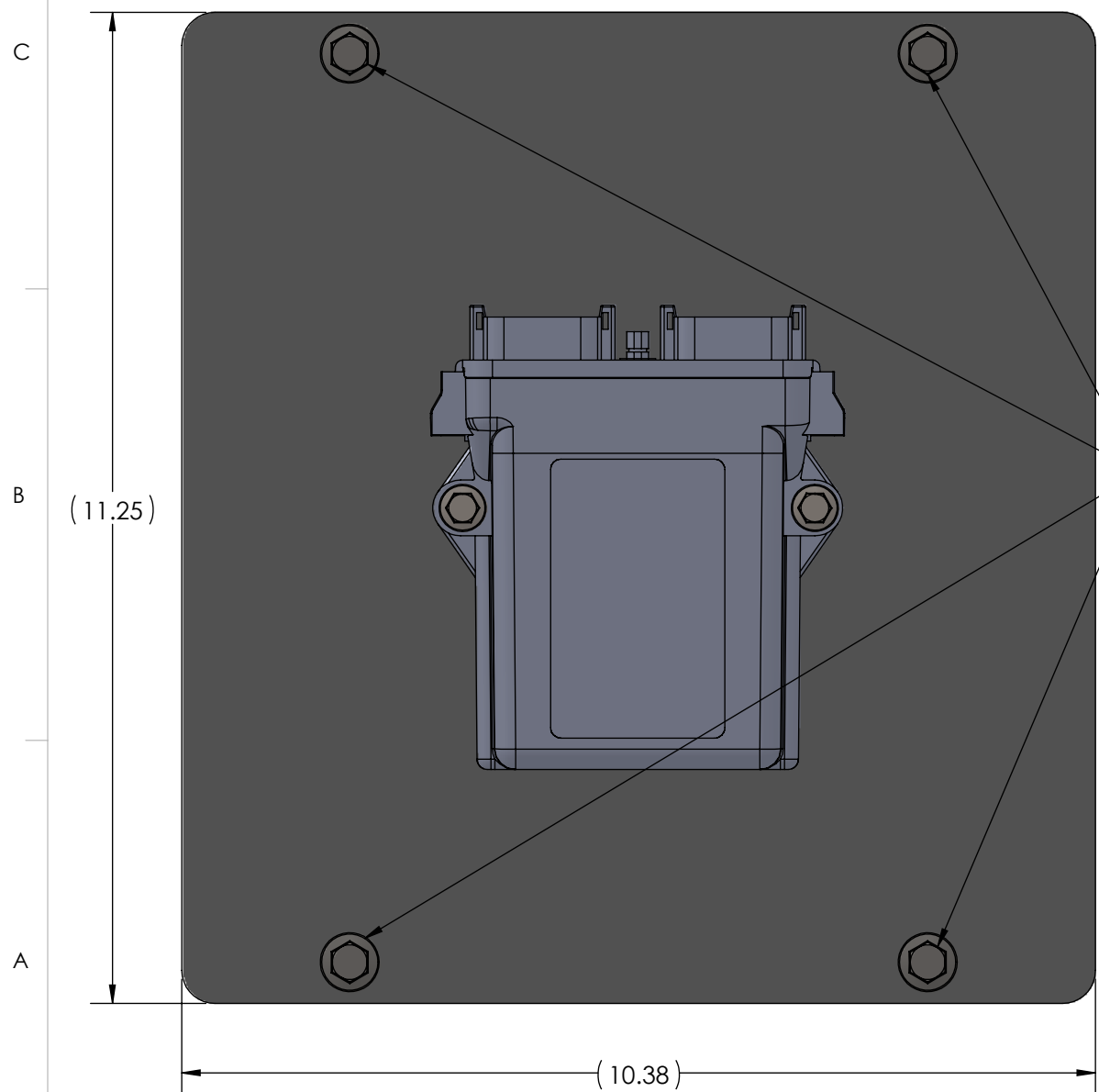
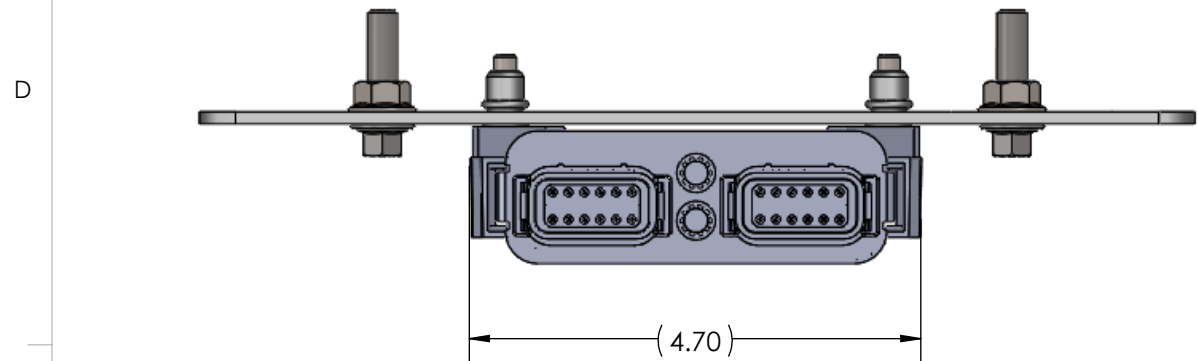
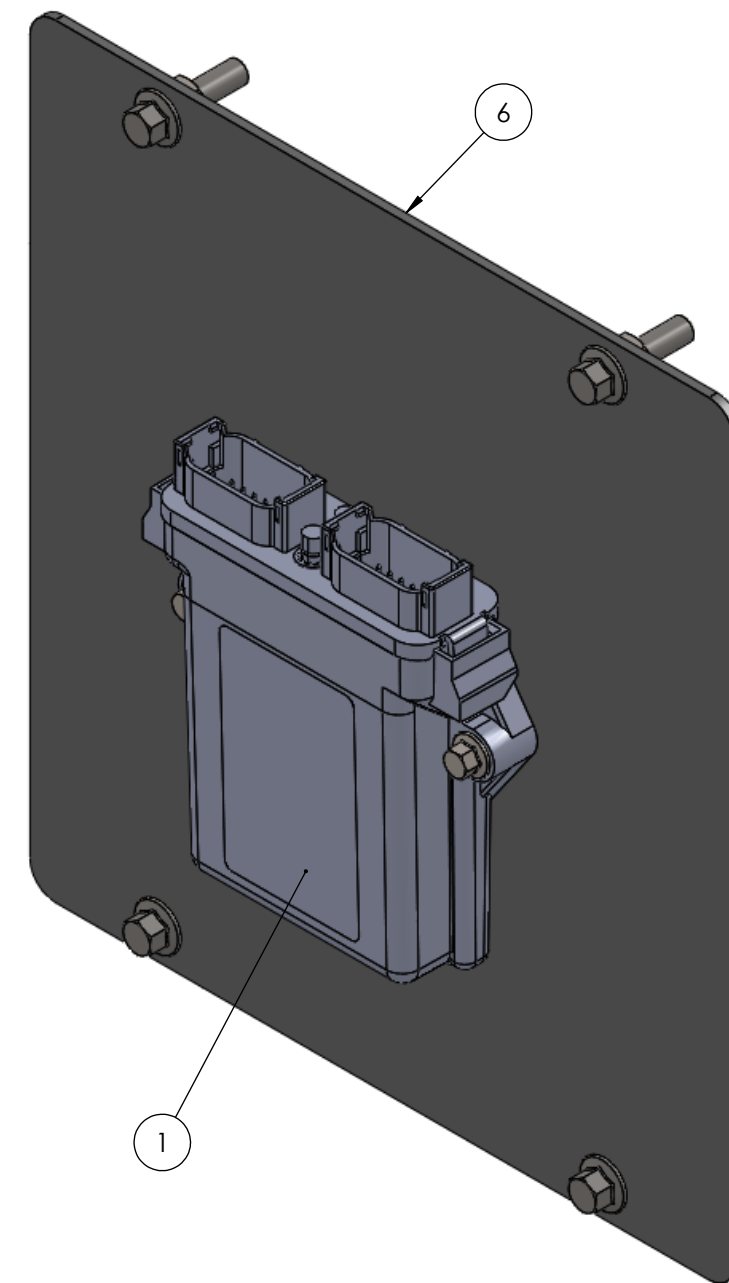
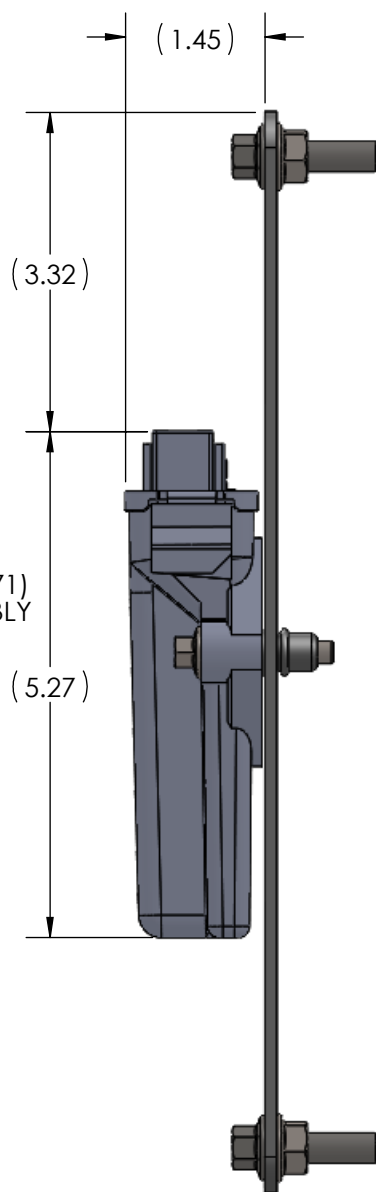


| REV | REVISION | DRAWN BY | APPROVAL | DATE |
|-----|-------------------------------|----------|----------|----------|
| 01 | INITIAL MANUFACTURING RELEASE | AJC | AJC | 01/07/14 |

| ITEM | PART NUMBER | REV | DESCRIPTION | DESCRIPTION 2 | Qty |
|------|-------------|-----|--------------------------------|-------------------------|-----|
| 1 | 10095 | | TELEMATICS MODULE,HED | CL-T02-100-ODS-001 | 1 |
| 2 | 10096 | | ANTENNA,TELEMATICS,HED,7M CBL1 | 108-01-606-GSM/GPS | 1 |
| 3 | 30071 | | NUT,FLANGE,M8X1.25MM | ZPS,GR 8.8 | 4 |
| 4 | 30115 | | BOLT,FLANGE HEAD,M8X1.25X30MM | ZPS,GR 8.8 | 4 |
| 5 | 30156 | | BOLT,FLANGE HEAD,M6X1.0X35MM | ZPS | 2 |
| 6 | 40249 | 01 | BRACKET,TELEMATICS,ASSY,HED | UNDER CAB,INTERNATIONAL | 1 |



LOCATION OF BOLTS (30126) AND NUTS (30071) TO ATTACH SUB ASSEMBLY TO CHASSIS



PROPRIETARY AND CONFIDENTIAL
THE INFORMATION CONTAINED IN THIS DRAWING IS THE SOLE PROPERTY OF ODYNE SYSTEMS LLC. REPRODUCTION IN PART OR AS A WHOLE WITHOUT THE WRITTEN PERMISSION OF ODYNE IS PROHIBITED.

UNLESS OTHERWISE SPECIFIED
REFERENCE DIMENSIONS SHOWN IN PARENTHESIS
DIMENSIONS ARE IN INCHES

| | | |
|----------|-----|----------|
| DRAWN | AJC | 01/07/14 |
| CHECKED | AJC | 01/07/14 |
| ENG APPR | AJC | 1/7/2014 |
| MFG APPR | AJC | 01/07/14 |
| QA APPR | | |

MATERIAL
INTERPRET GEOMETRIC TOLERANCE PER
ASME Y14.5M-1994



SUB ASSY,TELEMATICS,HED,INTL
UNDER CAB,INTERNATIONAL

| | | |
|-----------|----------------------|--------------|
| SIZE B | PART NUMBER 70235 | REV 01 |
| SCALE 1:2 | DO NOT SCALE DRAWING | SHEET 1 OF 2 |

| REV | REVISION | DRAWN BY | APPROVAL | DATE |
|-----|-------------------------------|----------|----------|----------|
| 01 | INITIAL MANUFACTURING RELEASE | AJC | AJC | 01/07/14 |

| ITEM | PART NUMBER | REV | DESCRIPTION | DESCRIPTION 2 | Qty |
|------|-------------|-----|-------------------------------|-------------------------|-----|
| 7 | 40249 | 01 | BRACKET,TELEMATICS,ASSY,HED | UNDER CAB,INTERNATIONAL | 1 |
| 8 | 10095 | | TELEMATICS MODULE,HED | CL-T02-100-ODS-001 | 1 |
| 9 | 30156 | | BOLT,FLANGE HEAD,M6X1.0X35MM | ZPS | 2 |
| 10 | 30115 | | BOLT,FLANGE HEAD,M8X1.25X30MM | ZPS,GR 8.8 | 4 |
| 11 | 30071 | | NUT,FLANGE,M8X1.25MM | ZPS,GR 8.8 | 4 |

D

D

C

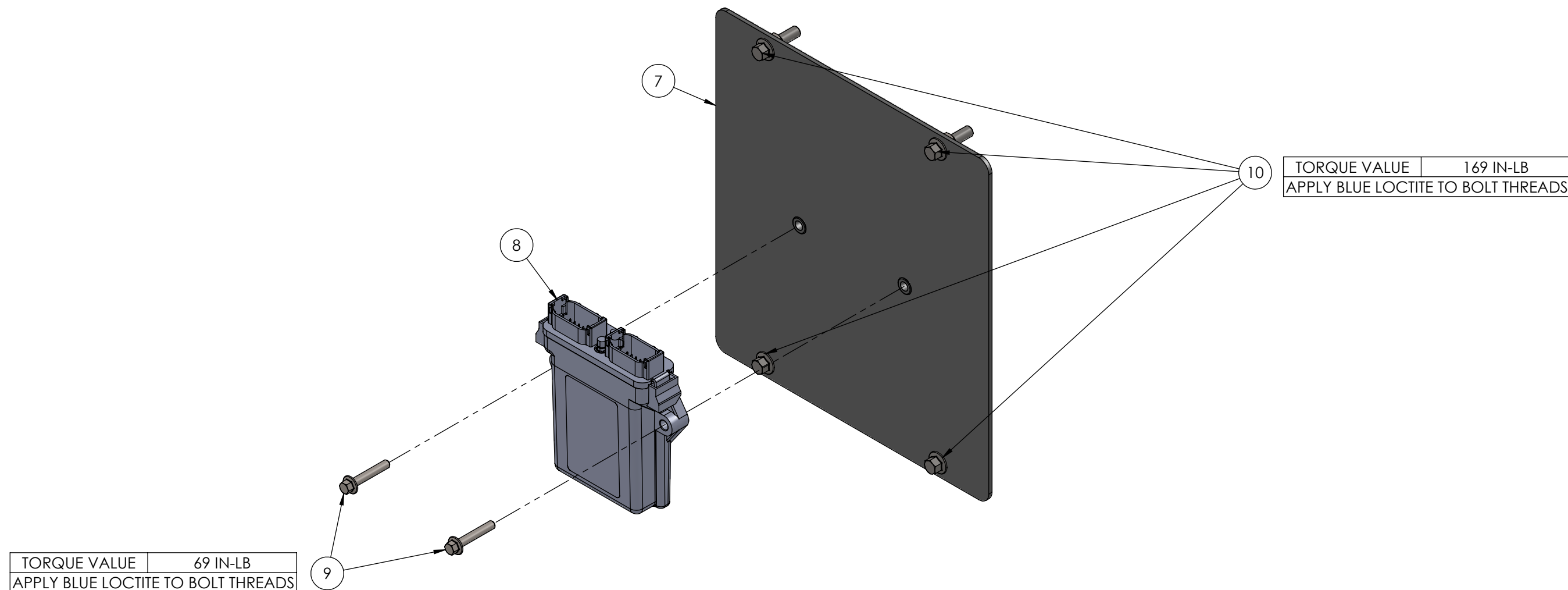
C

B

B

A

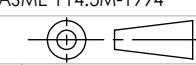
A



PROPRIETARY AND CONFIDENTIAL
 THE INFORMATION CONTAINED IN THIS DRAWING IS THE SOLE PROPERTY OF ODYNE SYSTEMS LLC.
 REPRODUCTION IN PART OR AS A WHOLE WITHOUT THE WRITTEN PERMISSION OF ODYNE IS PROHIBITED.

| | | | |
|---|----------|-----|----------|
| UNLESS OTHERWISE SPECIFIED REFERENCE DIMENSIONS SHOWN IN PARENTHESIS DIMENSIONS ARE IN INCHES | DRAWN | AJC | 01/07/14 |
| | CHECKED | AJC | 01/07/14 |
| ANGULAR ± 1.0° | ENG APPR | AJC | 1/7/2014 |
| NOMINAL ± 0.125 | MFG APPR | AJC | 01/07/14 |
| ONE PLACE DECIMAL ± 0.060 | QA APPR | | |
| TWO PLACE DECIMAL ± 0.030 | | | |
| THREE PLACE DECIMAL ± 0.010 | | | |

MATERIAL _____
 FINISH _____
 INTERPRET GEOMETRIC TOLERANCE PER ASME Y14.5M-1994



SUB ASSY,TELEMATICS,HED,INTL
 UNDER CAB,INTERNATIONAL

| | | |
|-----------|----------------------|--------------|
| SIZE B | PART NUMBER 70235 | REV 01 |
| SCALE 1:3 | DO NOT SCALE DRAWING | SHEET 2 OF 2 |