

System	Date of Issue	Type of Service Information
Odyne Systems	11/07/2017	<input type="checkbox"/> Troubleshooting <input checked="" type="checkbox"/> Procedure

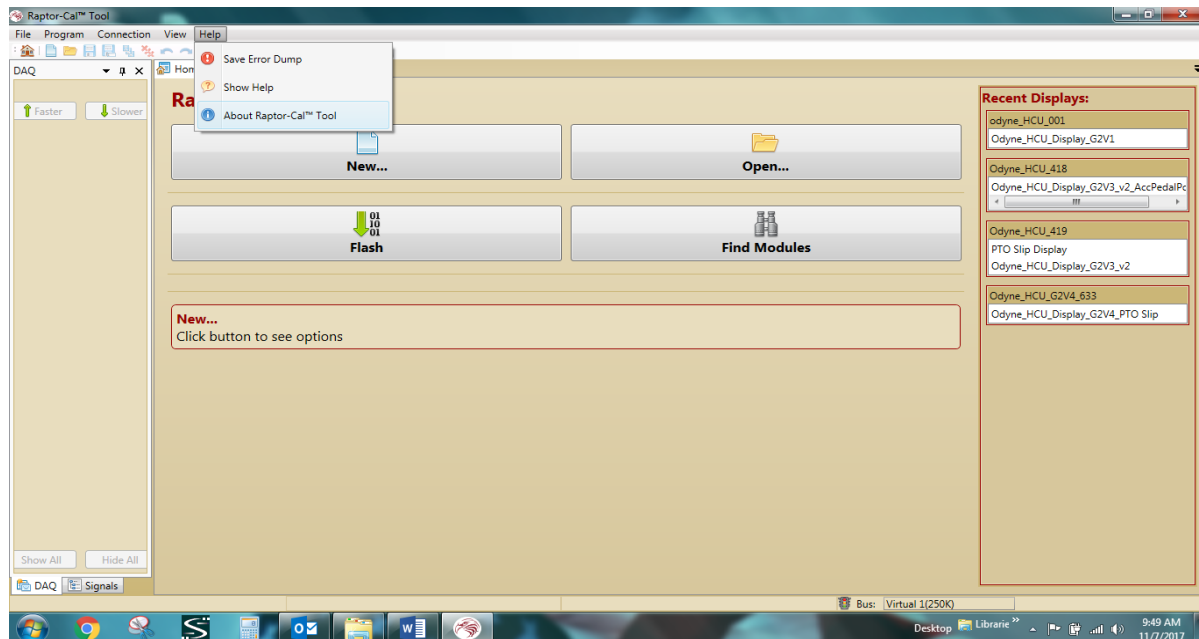
Title: Raptor Cal Service Tool: Update Software to Release SP6

Follow the steps below to identify your current version of Raptor Cal and if necessary update it to the latest software release.

Check Current Version



1. Open up Raptor Cal by double clicking the Raptor-Cal icon on your desktop.
2. On the Raptor Cal Main page, select *Help* and then select *About Raptor-Cal Tool*.



Raptor-Cal Tool Main Page

The information in this Service Information is intended for use by trained, professional technicians with the knowledge, tools, and equipment to do the job properly and safely. It informs these technicians of conditions that may occur on some vehicles, or provides information that could assist in proper vehicle service. Warranty Policy documentation determines Warranty coverage unless stated otherwise. The information in this Service Information was current at the time of printing. Odyne Systems, LLC reserves the right to supersede this information with updates. The most recent information is available through Odyne on-line technical resources.



3. In the About Raptor-Cal Tool pop-up window, note the current version which appears after *Assembly Version*. If it is **NOT** “2017a_0.0.1_SP6_Release”, follow steps 4 – 6 below to update your Raptor Cal to the latest version. If you already have the current version, do not update your software.



About Raptor-Cal Tool: Assembly Version

Update Software

4. Click on the link that was provided to you in the email notification to begin the download of the latest Raptor Cal software. If you do not have a link, visit www.odynesupport.com for the latest version.
5. After the download is complete, open it up and follow the steps to install the latest version of Raptor Cal.
6. After the installation is complete, follow steps 1 – 3 above and confirm that the latest version is installed.

Odyne Service Support Resources:

To request technical assistance, email ServiceSupport@Odyne.com or call 262-953-6723.

To request parts, contact Parts@Odyne.com.

The information in this Service Information is intended for use by trained, professional technicians with the knowledge, tools, and equipment to do the job properly and safely. It informs these technicians of conditions that may occur on some vehicles, or provides information that could assist in proper vehicle service. Warranty Policy documentation determines Warranty coverage unless stated otherwise. The information in this Service Information was current at the time of printing. Odyne Systems, LLC reserves the right to supersede this information with updates. The most recent information is available through Odyne on-line technical resources.