

System	Date of Issue	Bulletin Number	Bulletin Type
<b>Odyne Systems G2V2</b>	12/17/15	00029B	<input checked="" type="checkbox"/> <b>Field Service Action</b> <input type="checkbox"/> <b>Technical Service Bulletin</b> <input type="checkbox"/> <b>Technical Service Advisory</b>

**Title: PTO Driveline Repair**

**Issue: Potentially loose PTO Driveline Flange bolt and/or Traction Motor Flange bolt causes vibration which may result in damage to the PTO Driveline.**

The information in Technical Service Bulletins is intended for use by trained, professional technicians with the knowledge, tools, and equipment to do the job properly and safely. It informs these technicians of conditions that may occur on some vehicles, or provides information that could assist in proper vehicle service. Warranty Policy documentation determines Warranty coverage unless stated otherwise in the TSB article. The information in this Technical Service Bulletin (TSB) was current at the time of printing. Odyne Systems, LLC reserves the right to supersede this information with updates. The most recent information is available through Odyne on-line technical resources.

## Applies To:

1FVACXCY3FHGE4465	1HTMKAZRXEH783343	2NKHHJ8X1EM418899	3HAMKAAR3FL127542
1FVACXDT0EHFU8251	1HTMKSTN5GH228430	2NKHHJ8X4EM418900	3HAMKAAR5FL111908
1FVACXDT0FHGJ3519	1HTMKSTN7GH228428	2NKHHJ8X7GN491214	3HAMKAARXFL127540
1FVACXDT3FHGT1383	1HTMKSTN9GH228429	3ALACXDT6EDFX9591	3HAMKAZN5EL013882
1FVACXDT4EHFZ4035	1HTMMAAN09H130576	3ALACYDT6EDFV2462	3HAMMAAN7FL744336
1FVACXDT7FHGJ3520	1HTMMAAN0EH068235	3ALACYDT8EDFV2463	3HAMMMMN3FL522969
1FVACXDT8EHFU8241	1HTMMAAN0EH073774	3ALACYDTXEDFV2464	3HAMMMMNFXFL522970
1FVACXDT9EHFT2453	1HTMMAAN2EH068236	3FRXF7FG5FV671211	3HAWCAAR8FL690012
1FVACYCY0EHFX1130	1HTMMAAN2EH073775	3FRXF7FJ6FV679474	3HAWKAZN7FL644465
1FVACYCY8FHGE8002	1HTMMAAN4EH068237	3FRXF7FK6CV431150	3HAWKAZN9FL644466
1FVACYDT0FHGA6457	1HTMMAAN4EH068240	3FRYF7FE1CV353245	3HAWNAST6FL560823
1FVACYDT0FHGD3349	1HTMMAAN5EH073771	3FRYF7FE3CV353246	3HAWNAST8FL560824
1FVACYDT0FHGD3352	1HTMMAAN6EH028178	3FRYF7FE8CV353243	3HAZZMMR4GL207268
1FVACYDT1FHGJ5835	1HTMMAAN6EH068238	3FRYF7FEXCV353244	4UZAARDT1ECFY5086
1FVACYDT2FHGF2906	1HTMMAAN6EH068241	3FRYF7FL1DV061076	4UZAARDT4FCGB5324
1FVACYDT4BDAY7502	1HTMMAAN7EH073772	3FRYF7FL4DV061072	4UZAARDT7ECFX4125
1FVACYDT4FHGF2907	1HTMMAAN8EH068239	3FRYF7FL6DV061073	4UZAARDT7ECFY2354
1FVACYDT6BDAY7503	1HTMMAAN8EH068242	3FRYF7FL8DV026101	4UZAARDT8ECFY0550
1FVACYDT7EHFV5672	1HTMMAAN9EH068234	3FRYF7FLXDV026102	4UZAARDT9ECFY2355
1FVACYDT7FHGA6455	1HTMMAAN9EH073773	3FRYF7FLXDV061075	4UZAARDU1GCHG7734
1FVACYDT7FHGD3350	1HTMMAAN9GH746354	3FRYX7FE0CV353234	4UZAARDU3FCGF1160
1FVACYDT7FHGE2548	1HTMMAANXFH122187	3FRYX7FE2CV353235	4UZAARDU4FCGJ6387
1FVACYDT8FHGJ5833	1HTMMAANXFH526106	3FRYX7FE6CV353237	4UZAARDU4FCGJ6390
1FVACYDT9FHGA6456	1HTMMAAR1AH271521	3FRYX7FE6CV353240	4UZAARDU5GCHG7735
1FVACYDT9FHGD3351	1HTMMAAR3FH526161	3FRYX7FE8CV353238	4UZAARDU5GCHG7736
1FVACYDT9FHGE2549	1HTMMAAR4AH176726	3FRYX7FE8CV353241	4UZAARDU6FCGJ6388
1FVACYDTXFHJ5834	1HTMMAARX9H133102	3FRYX7FEXCV353239	4UZAARDU6FCGJ6391
1FVH65CY9FHGE5871	1HTMMMMN8FH686398	3FRYX7FEXCV353242	4UZAARDU7GCHJ9241
1FVHCYCY1FHGG7828	1HTWDAARX9J120867	3FRYX7FL0DV026106	4UZAARDU8FCGJ6389
1FVHCYCYXFHGG7827	1HTWGAAR5EH105251	3FRYX7FL2DV026107	4UZAARDU8FCGJ6392
1FVHG3DV4FHGE0053	1HTWGAAR7EH095922	3FRYX7FL2DV026110	4UZAARDU8GCHG7732

The information in Technical Service Bulletins is intended for use by trained, professional technicians with the knowledge, tools, and equipment to do the job properly and safely. It informs these technicians of conditions that may occur on some vehicles, or provides information that could assist in proper vehicle service. Warranty Policy documentation determines Warranty coverage unless stated otherwise in the TSB article. The information in this Technical Service Bulletin (TSB) was current at the time of printing. Odyne Systems, LLC reserves the right to supersede this information with updates. The most recent information is available through Odyne on-line technical resources.

1FVHG3DV6FHGE0054	1HTWGAAR7EH105252	3FRYX7FL4DV026108	4UZAARDU9GCHE5223
1FVHG3DV8FHGE0055	1HTWGAAR9EH095923	3FRYX7FL5DV026103	4UZAARDU9GCHJ9242
1FVHG5CY0FHGE5872	1HTWGAAR9EH105253	3FRYX7FL6DV026109	4UZAARDUXGCHG7733
1HTJTSKR9EH052340	1HTWGAZR3FH617144	3FRYX7FL7DV026104	IHTMMAAN9GH746340
1HTMKAZN7FH567738	1HTWGAZT0FH518065	3FRYX7FL9DV026105	

**Special Tools or Software Required:**

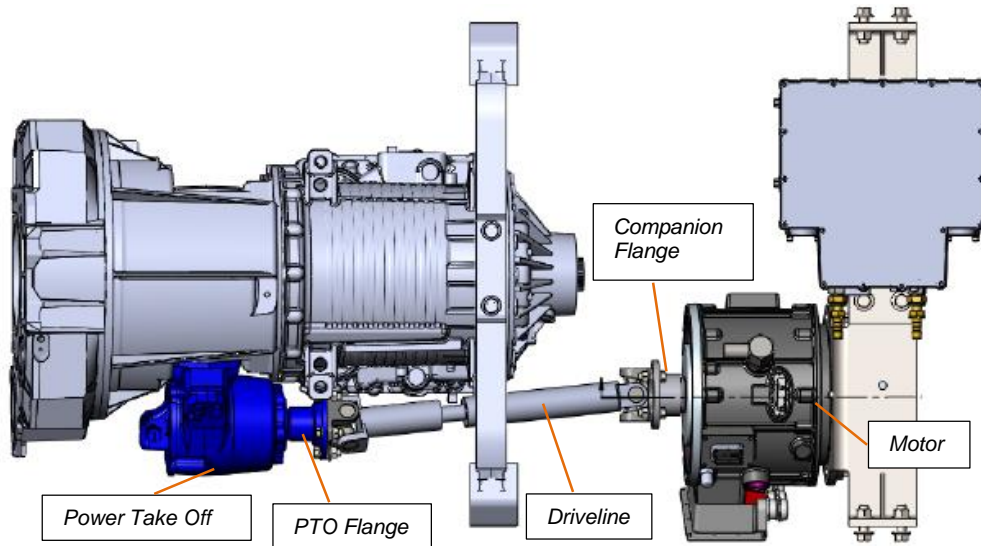
Where Available	Type of Tool	Equipment Description
	N/A	

**Action: Remove PTO Driveline and install PTO, Motor Flange, and Driveline hardware. If flanges are damaged, request replacements.**

The information in Technical Service Bulletins is intended for use by trained, professional technicians with the knowledge, tools, and equipment to do the job properly and safely. It informs these technicians of conditions that may occur on some vehicles, or provides information that could assist in proper vehicle service. Warranty Policy documentation determines Warranty coverage unless stated otherwise in the TSB article. The information in this Technical Service Bulletin (TSB) was current at the time of printing. Odyne Systems, LLC reserves the right to supersede this information with updates. The most recent information is available through Odyne on-line technical resources.

## Service Procedure:

Reference: The diagram below shows the relative positions of the Odyne PTO (Power Take Off), Driveline, Flange, and Motor.



*Overview Diagram*

The information in Technical Service Bulletins is intended for use by trained, professional technicians with the knowledge, tools, and equipment to do the job properly and safely. It informs these technicians of conditions that may occur on some vehicles, or provides information that could assist in proper vehicle service. Warranty Policy documentation determines Warranty coverage unless stated otherwise in the TSB article. The information in this Technical Service Bulletin (TSB) was current at the time of printing. Odyne Systems, LLC reserves the right to supersede this information with updates. The most recent information is available through Odyne on-line technical resources.



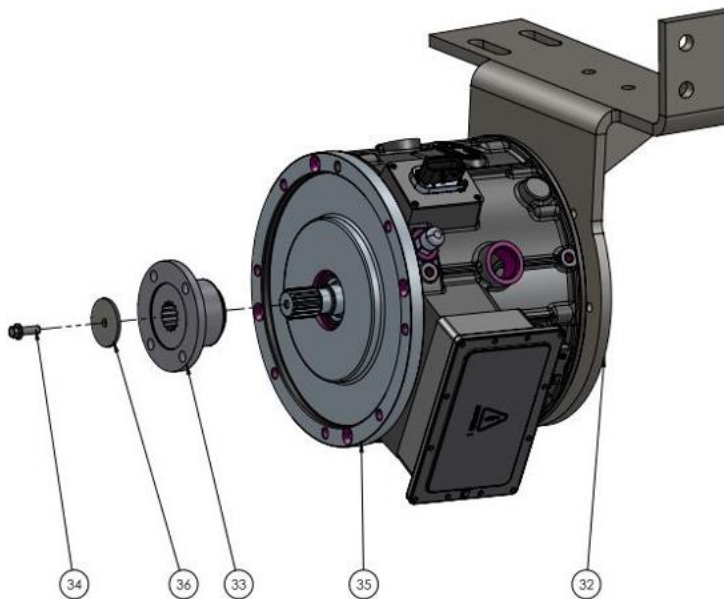
**Before Starting Procedure: Remove key from ignition and store in a safe place.**

#### Driveline Removal

1. Remove the eight bolts securing the driveline to the PTO and the motor companion flange. Set the driveline aside, and discard the bolts.

#### Traction Motor Flange Hardware Replacement

1. Secure the companion flange and remove the M8 bolt and washers from the motor shaft, and discard the bolt and washers.
2. Inspect the companion flange. If it is damaged, remove it and replace with companion flange part number 40074 (ref #33).
3. Install washer part number 30180 (ref #36) on bolt part number 30186 (ref #34).
4. Apply red Loctite to bolt threads.
5. Install bolt into threaded end of motor shaft and torque to 20 Ft.-Lbs.



*Bolt, Washer, Flange and Motor*

The information in Technical Service Bulletins is intended for use by trained, professional technicians with the knowledge, tools, and equipment to do the job properly and safely. It informs these technicians of conditions that may occur on some vehicles, or provides information that could assist in proper vehicle service. Warranty Policy documentation determines Warranty coverage unless stated otherwise in the TSB article. The information in this Technical Service Bulletin (TSB) was current at the time of printing. Odyne Systems, LLC reserves the right to supersede this information with updates. The most recent information is available through Odyne on-line technical resources.

6. Mark the head of the traction motor flange bolt and washer after torqued as shown below.



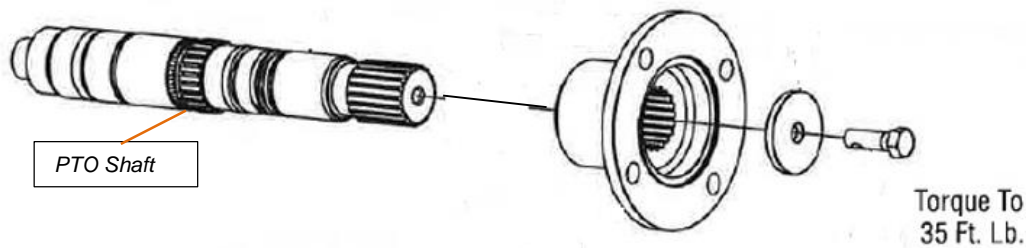
*Bolt and Washer: Marked*

The information in Technical Service Bulletins is intended for use by trained, professional technicians with the knowledge, tools, and equipment to do the job properly and safely. It informs these technicians of conditions that may occur on some vehicles, or provides information that could assist in proper vehicle service. Warranty Policy documentation determines Warranty coverage unless stated otherwise in the TSB article. The information in this Technical Service Bulletin (TSB) was current at the time of printing. Odyne Systems, LLC reserves the right to supersede this information with updates. The most recent information is available through Odyne on-line technical resources.



PTO Flange Hardware Replacement

1. Secure the PTO companion flange and remove the 3/8" bolt and washer from the motor shaft. Retain the washer, and discard the bolt.
2. Inspect the PTO companion flange. If it is damaged, remove it and replace with PTO companion flange part number 90007.
3. Reinstall the PTO washer on PTO bolt part number 90009.
4. Apply red Loctite to bolt threads.
5. Install bolt into threaded end of PTO shaft and torque to 35 Ft-Lbs.



*PTO Shaft and Flange*

The information in Technical Service Bulletins is intended for use by trained, professional technicians with the knowledge, tools, and equipment to do the job properly and safely. It informs these technicians of conditions that may occur on some vehicles, or provides information that could assist in proper vehicle service. Warranty Policy documentation determines Warranty coverage unless stated otherwise in the TSB article. The information in this Technical Service Bulletin (TSB) was current at the time of printing. Odyne Systems, LLC reserves the right to supersede this information with updates. The most recent information is available through Odyne on-line technical resources.

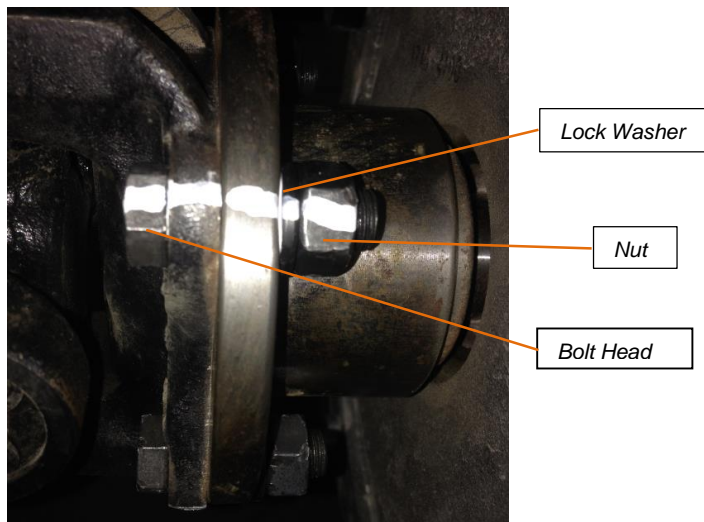


## Reinstall Driveline

1. Apply red Loctite to the eight new driveline bolts.
2. Install the bolts securing the driveline to the motor flange and the PTO, and torque to 63 Ft-Lbs.

**Installation Tip:** Feed the bolt from the driveline side, and feed the lock washer and nut from the flange side.

3. Mark the head of each of the eight driveline bolts and nuts after torqued, as shown below.



*Driveline to Companion Flange Bolts: Marked*

The information in Technical Service Bulletins is intended for use by trained, professional technicians with the knowledge, tools, and equipment to do the job properly and safely. It informs these technicians of conditions that may occur on some vehicles, or provides information that could assist in proper vehicle service. Warranty Policy documentation determines Warranty coverage unless stated otherwise in the TSB article. The information in this Technical Service Bulletin (TSB) was current at the time of printing. Odyne Systems, LLC reserves the right to supersede this information with updates. The most recent information is available through Odyne on-line technical resources.



## Parts Required:

Part Number	Description	Qty
90011	PTO Driveline Hardware Kit	1
Shop Supply	Red Loctite	1

## Optional Parts: Replace only if damaged.

Part Number	Description	Qty
40074	Traction Motor Companion Flange	1
90007	PTO Companion Flange	1

## Warranty Information:

Code	Description	Time
00029B	PTO Driveline Repair	1.0

## Odyne Service Support Resources:

To request technical assistance, contact [ServiceSupport@Odyne.com](mailto:ServiceSupport@Odyne.com).

To request parts, contact [Parts@Odyne.com](mailto:Parts@Odyne.com).

The information in Technical Service Bulletins is intended for use by trained, professional technicians with the knowledge, tools, and equipment to do the job properly and safely. It informs these technicians of conditions that may occur on some vehicles, or provides information that could assist in proper vehicle service. Warranty Policy documentation determines Warranty coverage unless stated otherwise in the TSB article. The information in this Technical Service Bulletin (TSB) was current at the time of printing. Odyne Systems, LLC reserves the right to supersede this information with updates. The most recent information is available through Odyne on-line technical resources.