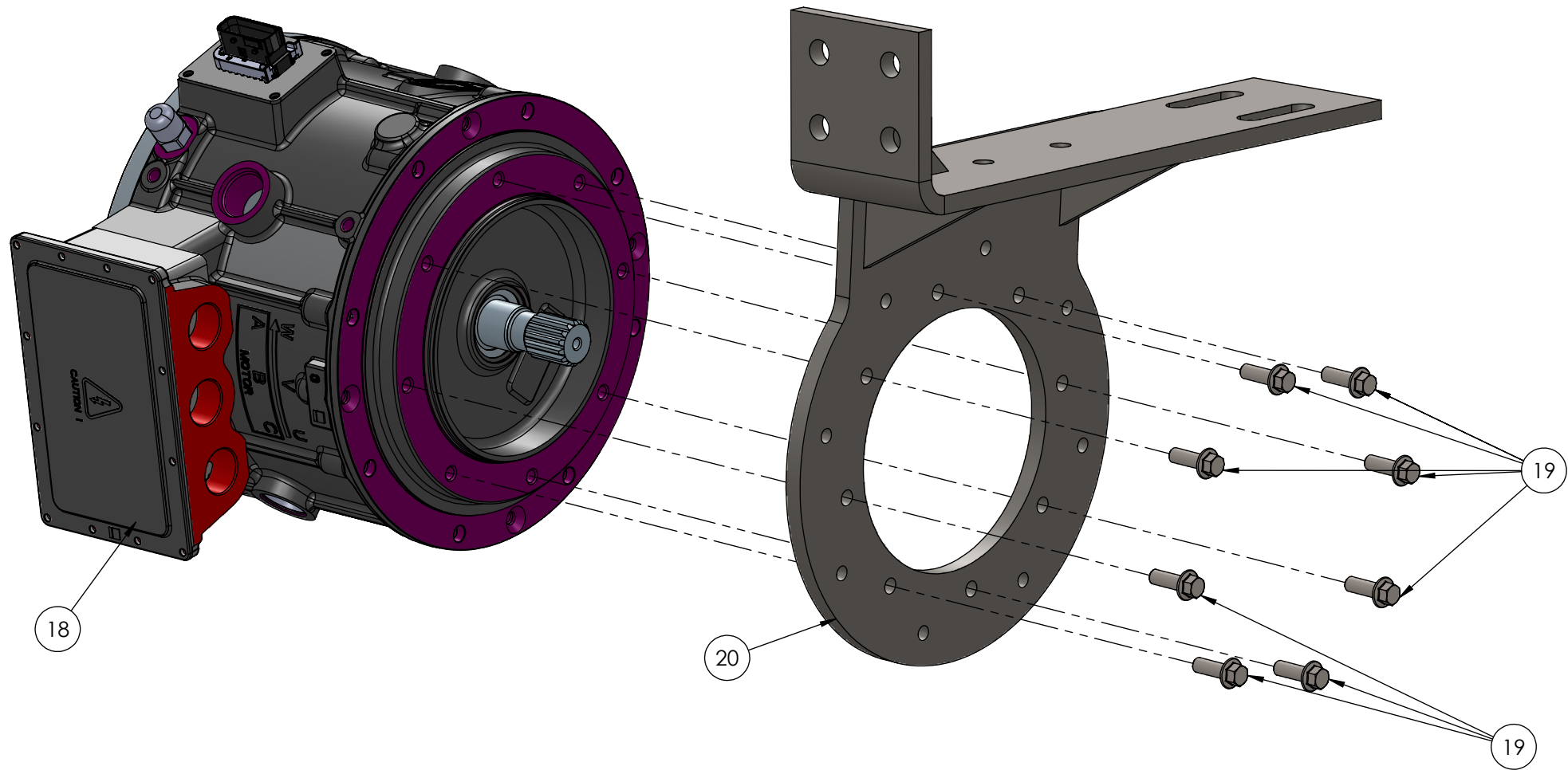


ITEM	PART NUMBER	REV	DESCRIPTION	DESCRIPTION 2	Qty
1	10002		MOTOR,TRACTION,60KW	200NM,LIQUID COOLED	1
2	20025		HARNESS,INVERTER MOTOR	3 WAY EPOWER HARNESS	1
3	20026		CABLE GRIP 32MMX1.5	32MM CABLE GRIP HVJB	3
4	20186		HEATSHRINK TUBING 0.75"	ADHESIVE LINED 3/4" HEAT SHRNK	15CM
5	20192		RING LUG 2/0 1/4"	1/4 RING LUG 2/0 AWG WIRE	3
6	30053		BOLT,FLANGE HEAD,M10X1.5X30MM	ZPS,GR 8.8	8
7	30065		BOLT,FLANGE HEAD,M12X1.75X30MM	ZPS,GR 8.8	4
8	30108		BOLT,FLANGE HEAD,M6X1.0X12MM	ZPS,GR 8.8	3
9	30180		WASHER,FLAT,.333X1.557X.111	ZPS,THRU HARDENED	1
10	30186		BOLT,FLANGE HEAD,M8X1.25X20MM	BLACK PHOSPHATE,GRADE 10.9	1
11	40051		BELLOUSING, SAE B	WITH MALE PILOT	1
12	40074	02	FLANGE, COMPANION, 14T TO 1310	FOR REMY MOTOR	1
13	40263	04	BRACKET,MOTOR SUPPORT ASSY	REMY MOTOR,G2V2 PIE WAGON	1
14	50037		ADAPTER,16ORB TO 1" HOSE		1
15	50065		ADAPTER,16ORB TO 10ORFS		1
16	50069		HOSE END,90 DEG,10-10,PUSHLOC	ORFS,801 HOSE,SHORT DROP	1
17	60005		LABEL,SHOCK HAZARD	ELECTRIC SHOCK HAZRD TRIANGLE	1

05	REVISED PART #40263	AJC	11/17/15
REV	DESCRIPTION OF CHANGE	REVISED BY	DATE

PROPRIETARY AND CONFIDENTIAL THE INFORMATION CONTAINED IN THIS DRAWING IS THE SOLE PROPERTY OF ODYNE SYSTEMS LLC. REPRODUCTION IN PART OR AS A WHOLE WITHOUT THE WRITTEN PERMISSION OF ODYNE IS PROHIBITED.			
UNLESS OTHERWISE SPECIFIED REFERENCE DIMENSIONS SHOWN IN PARENTHESIS DIMENSIONS ARE IN INCHES	DRAWN AJC 04/04/14	www.odyne.com SUB-ASSY,MOTOR/BRACKET G2V2 PIE WAGON	
ANGULAR ± 1.0° NOMINAL ± 0.125 ONE PLACE DECIMAL ± 0.060 TWO PLACE DECIMAL ± 0.030 THREE PLACE DECIMAL ± 0.010	INTERPRET GEOMETRIC TOLERANCE PER ASME Y14.5M-1994	SHEET SIZE B	PART NUMBER 70178
MATERIAL FINISH		SCALE 1:5 DO NOT SCALE DRAWING	REV 05 SHEET 1 OF 6


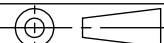
ITEM	PART NUMBER	REV	DESCRIPTION	DESCRIPTION 2	Qty
18	10002		MOTOR, TRACTION, 60KW	200NM, LIQUID COOLED	1
19	30053		BOLT, FLANGE HEAD, M10X1.5X30MM	ZPS, GR 8.8	8
20	40263	04	BRACKET, MOTOR SUPPORT ASSY	REMY MOTOR, G2V2 PIE WAGON	1



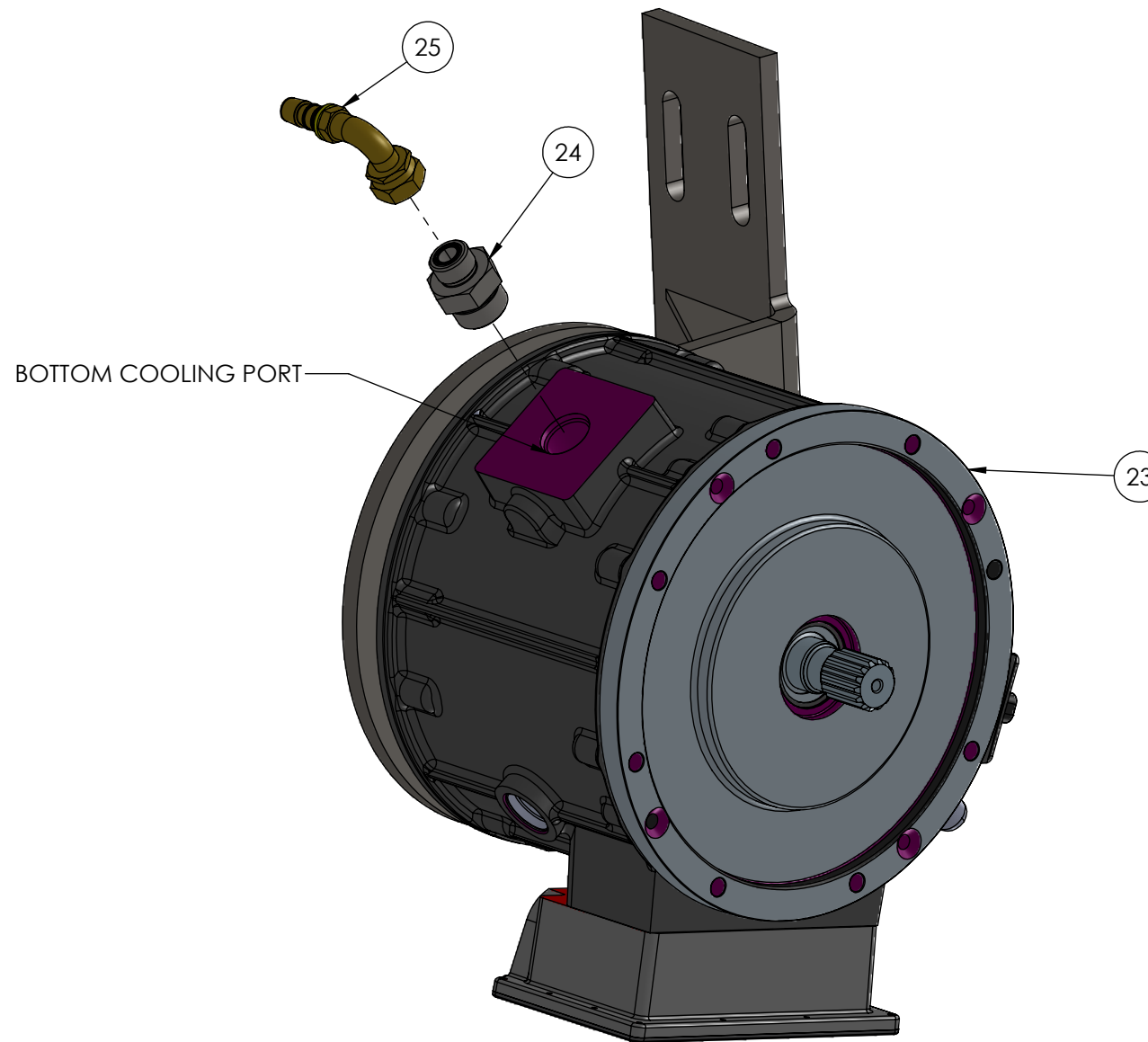
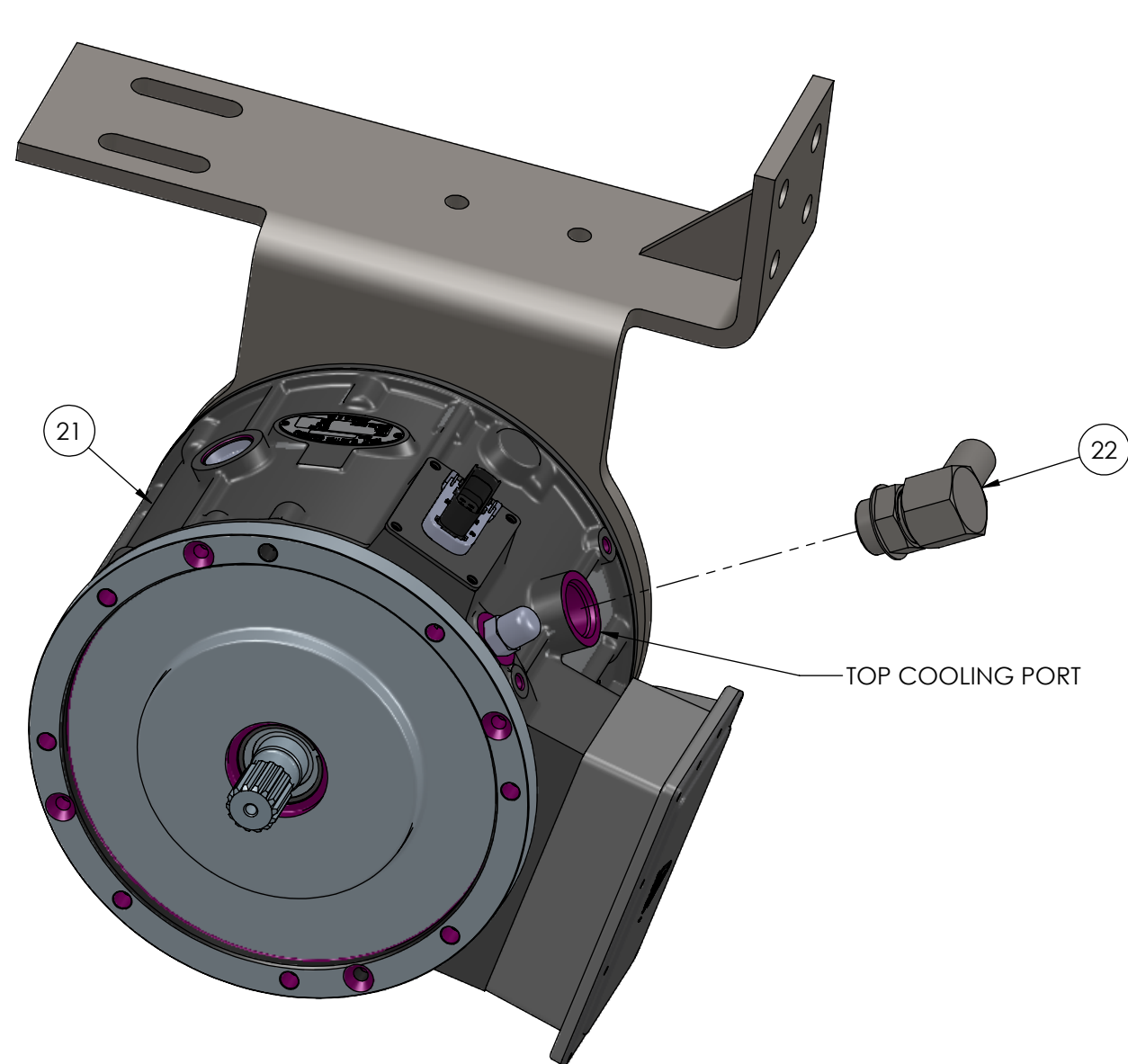
TORQUE VALUE	22 FT-LB
APPLY BLUE LOCTITE TO BOLT THREADS	

MOTOR SUPPORT BRACKET INSTALLATION

05	REVISED PART #40263	AJC	11/17/15
REV	DESCRIPTION OF CHANGE	REVISED BY	DATE

PROPRIETARY AND CONFIDENTIAL <small>THE INFORMATION CONTAINED IN THIS DRAWING IS THE SOLE PROPERTY OF ODYNE SYSTEMS LLC. REPRODUCTION IN PART OR AS A WHOLE WITHOUT THE WRITTEN PERMISSION OF ODYNE IS PROHIBITED.</small>				 www.odyne.com	
<small>UNLESS OTHERWISE SPECIFIED REFERENCE DIMENSIONS SHOWN IN PARENTHESIS DIMENSIONS ARE IN INCHES</small>		DRAWN AJC 04/04/14			
<small>ANGULAR ± 1.0° NOMINAL ± 0.125 ONE PLACE DECIMAL ± 0.060 TWO PLACE DECIMAL ± 0.030 THREE PLACE DECIMAL ± 0.010</small>				SUB-ASSY, MOTOR/BRACKET G2V2 PIE WAGON	
<small>MATERIAL</small>		<small>INTERPRET GEOMETRIC TOLERANCE PER ASME Y14.5M-1994</small>		SHEET SIZE B	PART NUMBER 70178
<small>FINISH</small>				SCALE 1:4 DO NOT SCALE DRAWING	REV 05 SHEET 2 OF 6

ITEM	PART NUMBER	REV	DESCRIPTION	DESCRIPTION 2	Qty
21	10002		MOTOR,TRACTION,60KW	200NM,LIQUID COOLED	1
22	50037		ADAPTER,16ORB TO 1" HOSE		1



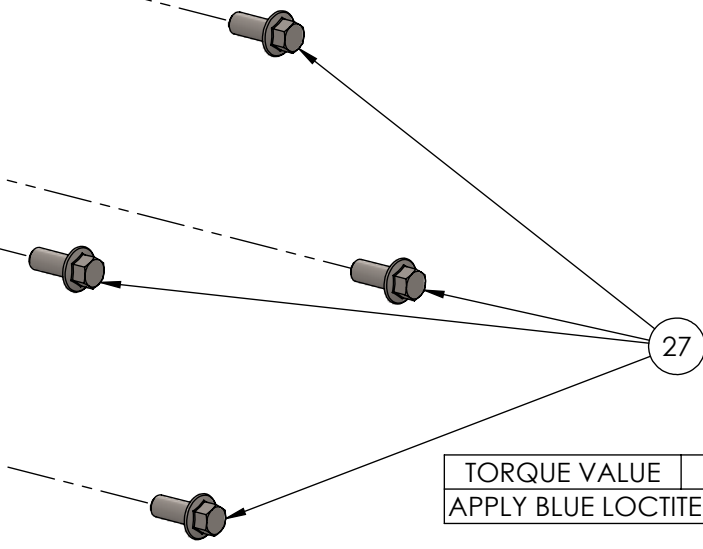
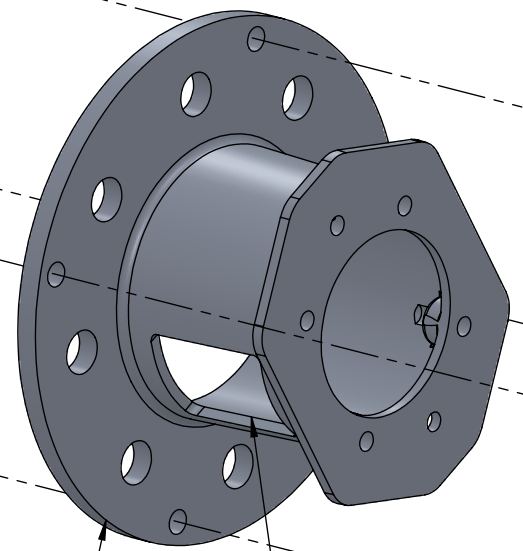
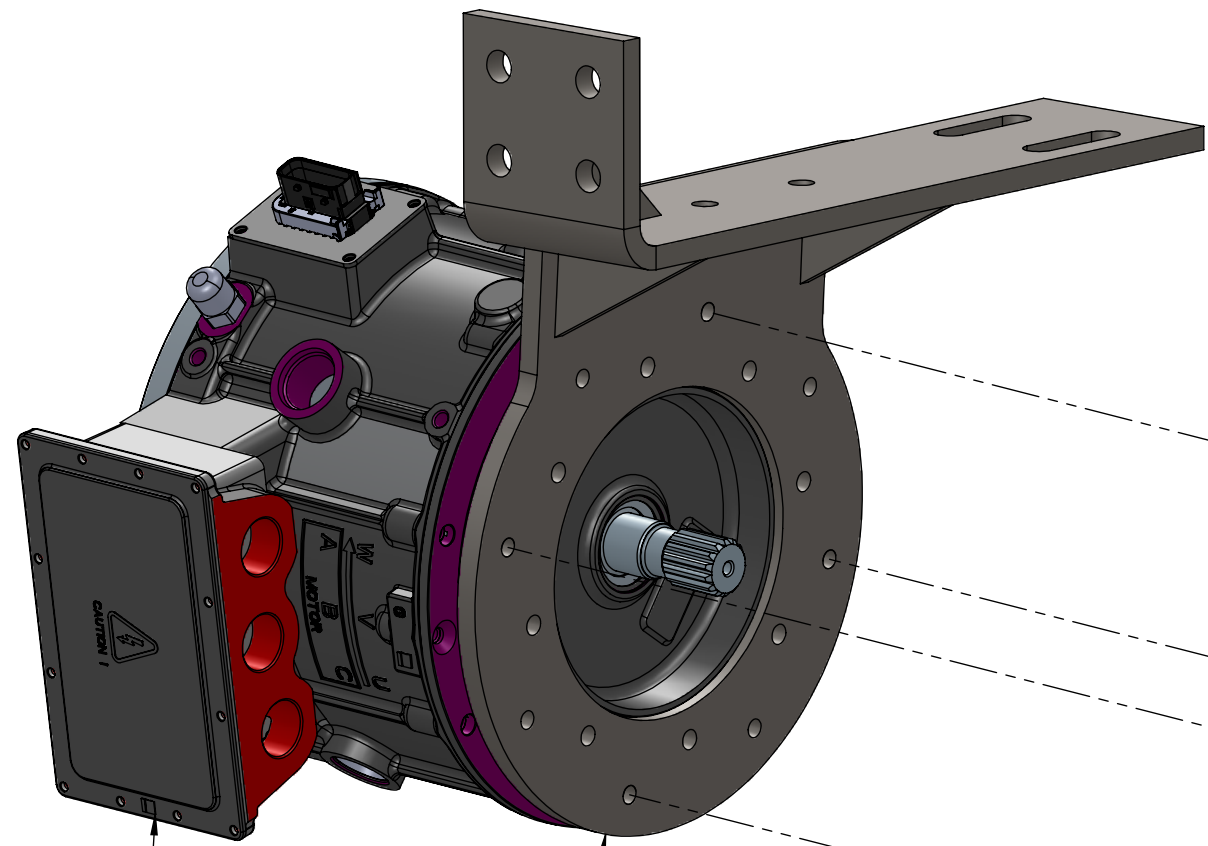
ITEM	PART NUMBER	REV	DESCRIPTION	DESCRIPTION 2	Qty
23	10002		MOTOR,TRACTION,60KW	200NM,LIQUID COOLED	1
24	50065		ADAPTER,16ORB TO 10ORFS		1
25	50069		HOSE END,90 DEG,10-10,PUSHLOC	ORFS,801 HOSE,SHORT DROP	1

BOTTOM COOLING FITTING INSTALLATION

05	REVISED PART #40263	AJC	11/17/15
REV	DESCRIPTION OF CHANGE	REVISED BY	DATE

PROPRIETARY AND CONFIDENTIAL				UDYNE	
THE INFORMATION CONTAINED IN THIS DRAWING IS THE SOLE PROPERTY OF ODYNE SYSTEMS LLC. REPRODUCTION IN PART OR AS A WHOLE WITHOUT THE WRITTEN PERMISSION OF ODYNE IS PROHIBITED.				www.odyne.com	
UNLESS OTHERWISE SPECIFIED REFERENCE DIMENSIONS SHOWN IN PARENTHESIS DIMENSIONS ARE IN INCHES				DRAWN	AJC
ANGULAR ± 1.0°				04/04/14	
NOMINAL ± 0.125					
ONE PLACE DECIMAL ± 0.060					
TWO PLACE DECIMAL ± 0.030					
THREE PLACE DECIMAL ± 0.010					
MATERIAL		INTERPRET GEOMETRIC TOLERANCE PER ASME Y14.5M-1994		SHEET SIZE	PART NUMBER
FINISH				B	70178
				SCALE 1:4	DO NOT SCALE DRAWING
					REV
					05
					SHEET 3 OF 6

ITEM	PART NUMBER	REV	DESCRIPTION	DESCRIPTION 2	Qty
26	10002		MOTOR, TRACTION, 60KW	200NM, LIQUID COOLED	1
27	30065		BOLT, FLANGE HEAD, M12X1.75X30MM	ZPS, GR 8.8	4
28	40051		BELLHOUSING, SAE B	WITH MALE PILOT	1
29	40263	04	BRACKET, MOTOR SUPPORT ASSY	REMY MOTOR, G2V2 PIE WAGON	1



TORQUE VALUE 49 FT-LB
APPLY BLUE LOCTITE TO BOLT THREADS

BELLHOUSING INSTALLATION

05	REVISED PART #40263	AJC	11/17/15
REV	DESCRIPTION OF CHANGE	REVISED BY	DATE

PROPRIETARY AND CONFIDENTIAL
THE INFORMATION CONTAINED IN THIS DRAWING IS THE SOLE PROPERTY OF ODYNE SYSTEMS LLC. REPRODUCTION IN PART OR AS A WHOLE WITHOUT THE WRITTEN PERMISSION OF ODYNE IS PROHIBITED.

UNLESS OTHERWISE SPECIFIED REFERENCE DIMENSIONS SHOWN IN PARENTHESIS DIMENSIONS ARE IN INCHES	DRAWN	AJC	04/04/14
ANGULAR ± 1.0°			
NOMINAL ± 0.125			
ONE PLACE DECIMAL ± 0.060			
TWO PLACE DECIMAL ± 0.030			
THREE PLACE DECIMAL ± 0.010			

MATERIAL: INTERPRET GEOMETRIC TOLERANCE PER ASME Y14.5M-1994

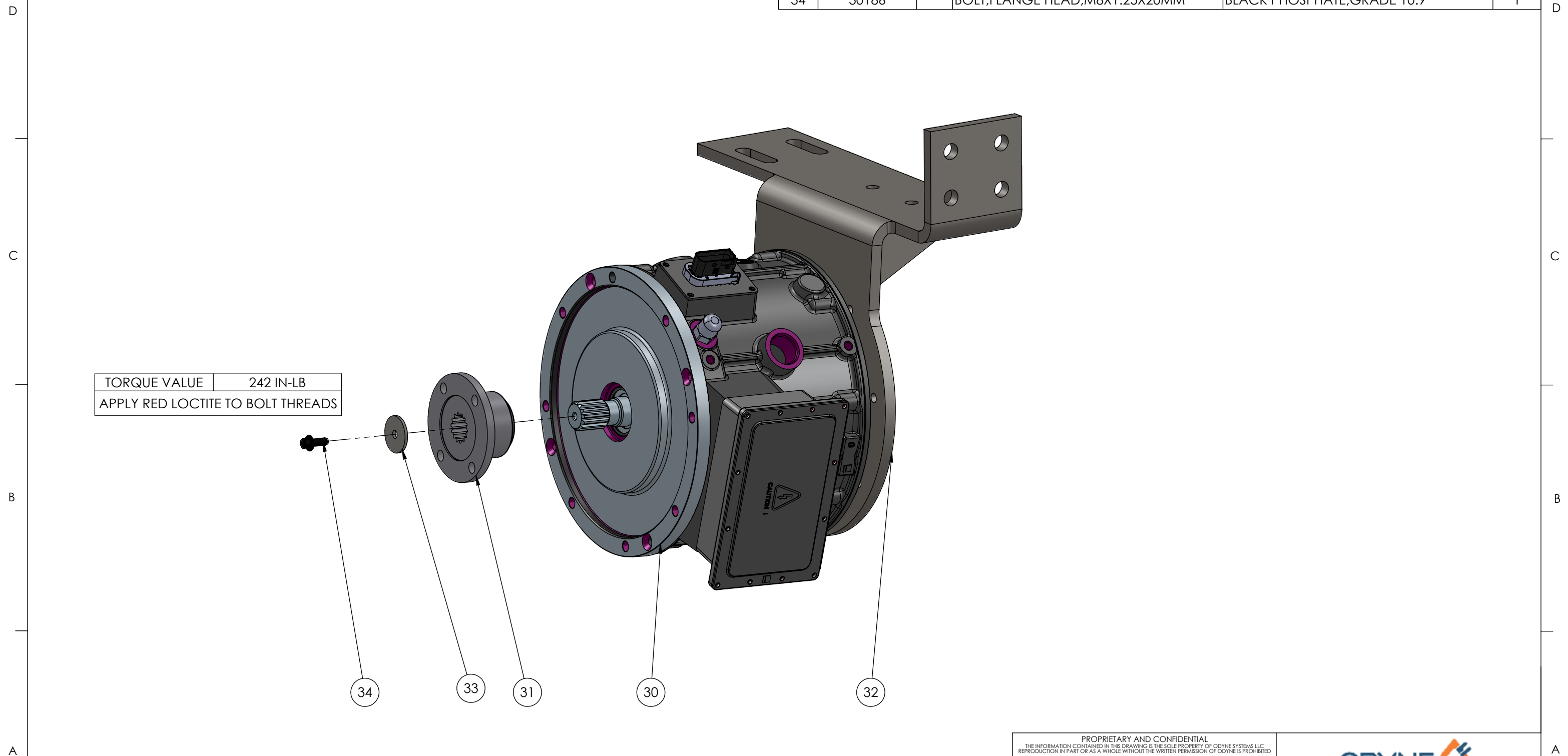
FINISH:

ODYNE
www.odyne.com

SUB-ASSY, MOTOR/BRACKET
G2V2 PIE WAGON

SHEET SIZE	PART NUMBER	REV
B	70178	05
SCALE 1:4	DO NOT SCALE DRAWING	SHEET 4 OF 6


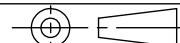
ITEM	PART NUMBER	REV	DESCRIPTION	DESCRIPTION 2	Qty
30	10002		MOTOR, TRACTION, 60KW	200NM, LIQUID COOLED	1
31	40074	02	FLANGE, COMPANION, 14T TO 1310	FOR REMY MOTOR	1
32	40263	04	BRACKET, MOTOR SUPPORT ASSY	REMY MOTOR, G2V2 PIE WAGON	1
33	30180		WASHER, FLAT, .333X1.557X.111	ZPS, THRU HARDENED	1
34	30186		BOLT, FLANGE HEAD, M8X1.25X20MM	BLACK PHOSPHATE, GRADE 10.9	1



TORQUE VALUE	242 IN-LB
APPLY RED LOCTITE TO BOLT THREADS	

MOTOR COUPLER INSTALLATION

05	REVISED PART #40263	AJC	11/17/15
REV	DESCRIPTION OF CHANGE	REVISED BY	DATE

PROPRIETARY AND CONFIDENTIAL <small>THE INFORMATION CONTAINED IN THIS DRAWING IS THE SOLE PROPERTY OF ODYNE SYSTEMS LLC. REPRODUCTION IN PART OR AS A WHOLE WITHOUT THE WRITTEN PERMISSION OF ODYNE IS PROHIBITED.</small>				 www.odyne.com	
<small>UNLESS OTHERWISE SPECIFIED REFERENCE DIMENSIONS SHOWN IN PARENTHESIS DIMENSIONS ARE IN INCHES</small>		DRAWN AJC 04/04/14	04/04/14		
<small>ANGULAR ± 1.0° NOMINAL ± 0.125 ONE PLACE DECIMAL ± 0.060 TWO PLACE DECIMAL ± 0.030 THREE PLACE DECIMAL ± 0.010</small>				SUB-ASSY, MOTOR/BACKET G2V2 PIE WAGON	
<small>MATERIAL</small>		<small>INTERPRET GEOMETRIC TOLERANCE PER ASME Y14.5M-1994</small>		SHEET SIZE B	PART NUMBER 70178
<small>FINISH</small>				SCALE 1:4 DO NOT SCALE DRAWING	REV 05 SHEET 5 OF 6

D

C

B

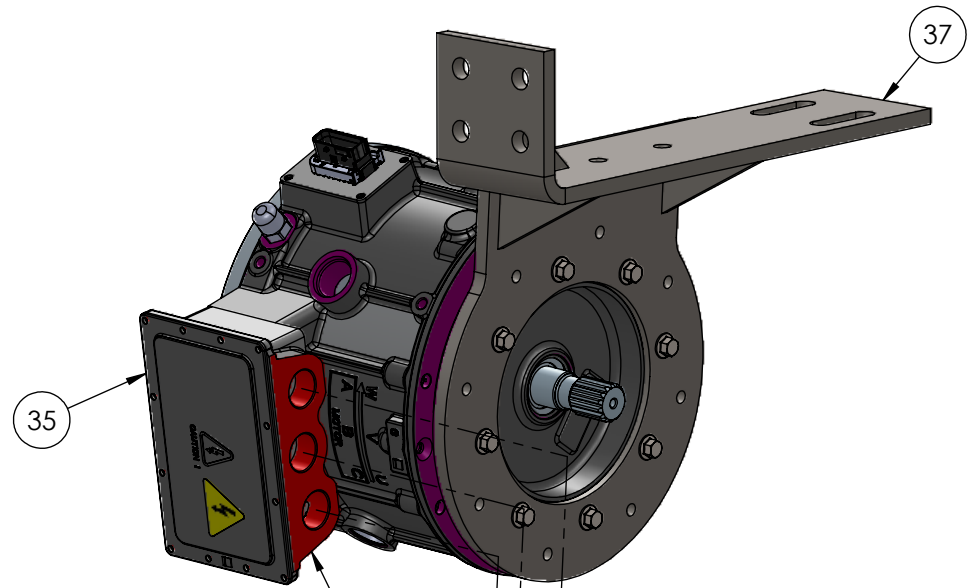
A

D

C

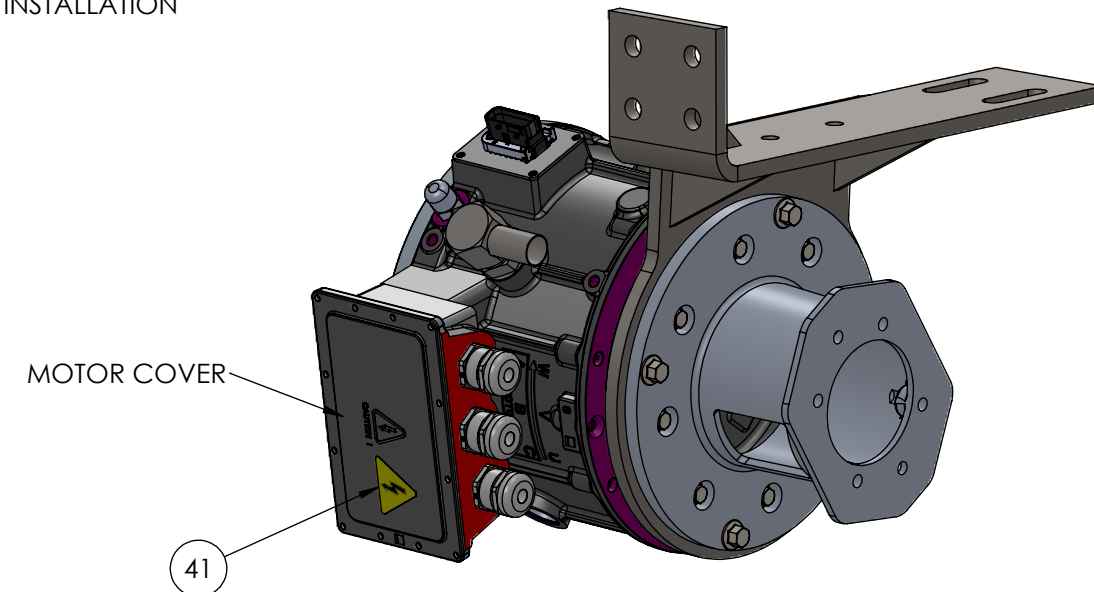
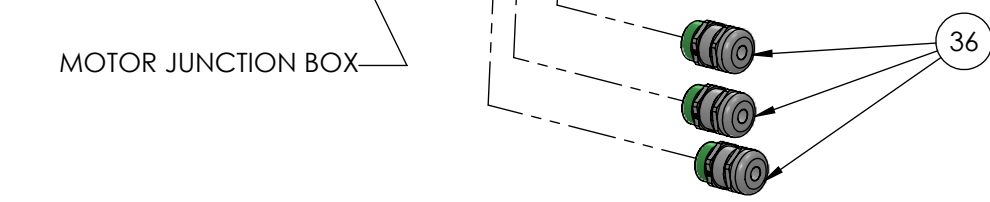
B

A



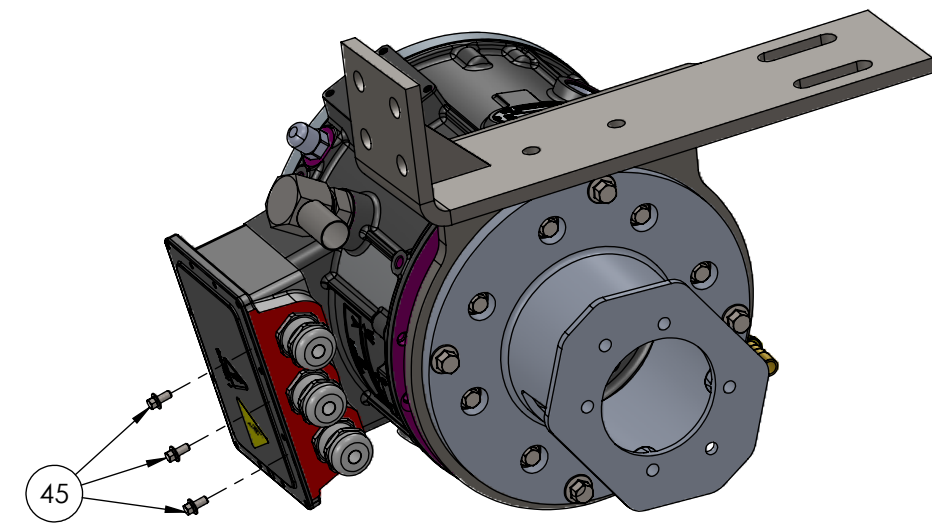
ITEM	PART NUMBER	REV	DESCRIPTION	DESCRIPTION 2	Qty
35	10002		MOTOR,TRACTION,60KW	200NM,LIQUID COOLED	1
36	20026		CABLE GRIP 32MMX1.5	32MM CABLE GRIP HVJB	3
37	40263	04	BRACKET,MOTOR SUPPORT ASSY	REMY MOTOR,G2V2 PIE WAGON	1

CABLE GRIP INSTALLATION



ITEM	PART NUMBER	REV	DESCRIPTION	DESCRIPTION 2	Qty
38	20025		HARNESS,INVERTER MOTOR	3 WAY EPOWER HARNESS	1
39	20186		HEATSHRINK TUBING 0.75"	ADHESIVE LINED 3/4" HEAT SHRNK	1
40	20192		RING LUG 2/0 1/4"	1/4 RING LUG 2/0 AWG WIRE	3
41	60005		LABEL,SHOCK HAZARD	ELECTRIC SHOCK HAZRD TRIANGLE	1

SHOCK HAZARD DECAL INSTALLATION



ITEM	PART NUMBER	REV	DESCRIPTION	DESCRIPTION 2	Qty
42	20025		HARNESS,INVERTER MOTOR	3 WAY EPOWER HARNESS	1
43	20186		HEATSHRINK TUBING 0.75"	ADHESIVE LINED 3/4" HEAT SHRNK	1
44	20192		RING LUG 2/0 1/4"	1/4 RING LUG 2/0 AWG WIRE	3
45	30108		BOLT,FLANGE HEAD,M6X1.0X12MM	ZPS,GR 8.8	3

MOTOR TERMINAL BOLT INSTALLATION

05	REVISED PART #40263	AJC	11/17/15
REV	DESCRIPTION OF CHANGE	REVISED BY	DATE

PROPRIETARY AND CONFIDENTIAL THE INFORMATION CONTAINED IN THIS DRAWING IS THE SOLE PROPERTY OF ODYNE SYSTEMS LLC. REPRODUCTION IN PART OR AS A WHOLE WITHOUT THE WRITTEN PERMISSION OF ODYNE IS PROHIBITED.					
UNLESS OTHERWISE SPECIFIED REFERENCE DIMENSIONS SHOWN IN PARENTHESIS DIMENSIONS ARE IN INCHES		DRAWN AJC 04/04/14			
ANGULAR ± 1.0° NOMINAL ± 0.125 ONE PLACE DECIMAL ± 0.060 TWO PLACE DECIMAL ± 0.030 THREE PLACE DECIMAL ± 0.010		INTERPRET GEOMETRIC TOLERANCE PER ASME Y14.5M-1994		SHEET SIZE B	PART NUMBER 70178
MATERIAL		FINISH		SCALE 1:4	REV 05
				DO NOT SCALE DRAWING	SHEET 6 OF 6