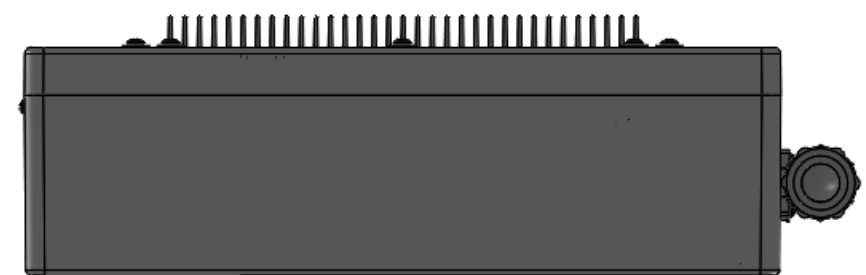
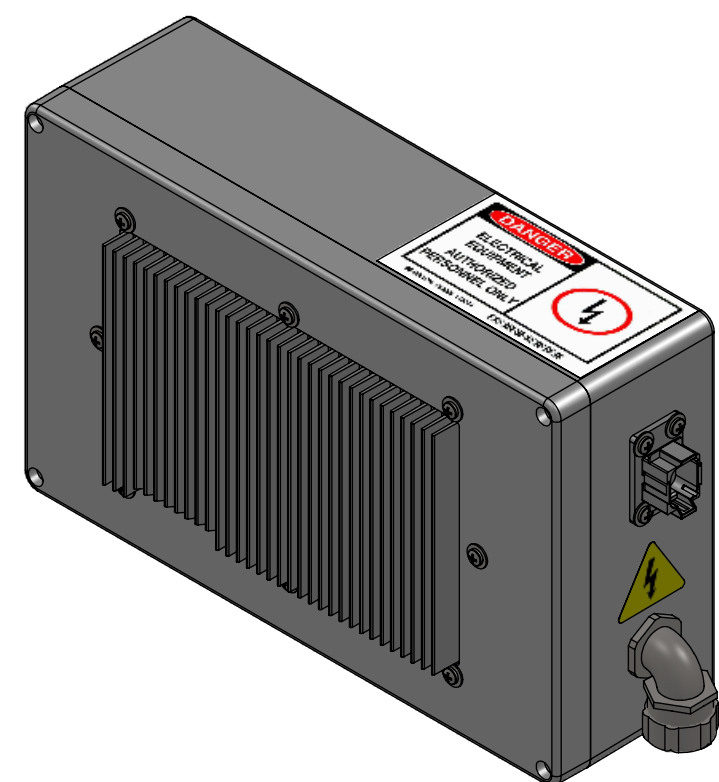
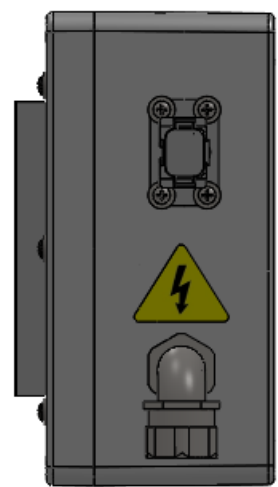
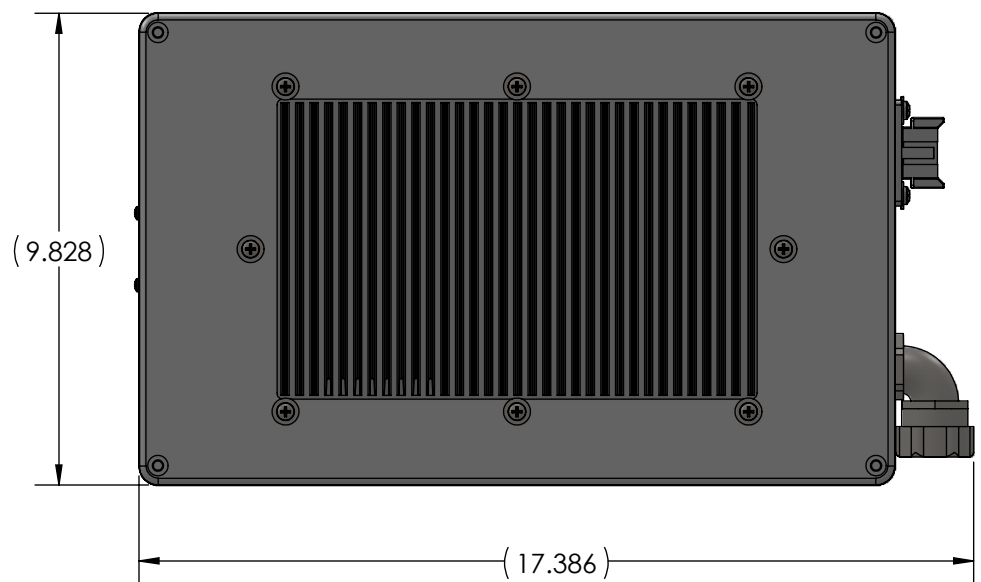
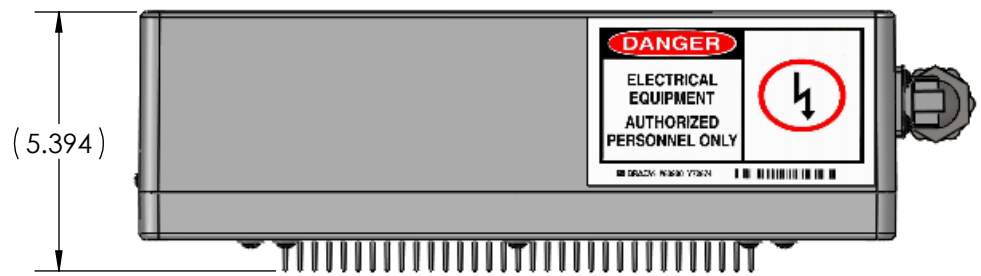


REV	REVISION	DRAWN BY	APPROVAL	DATE
03	DELETED PART #30089, ADDED PART #30173, ADDED NOTE TO LOCTITE HVIL SWITCH BOLTS	AJC	AJC	09/16/14

ITEM	PART NUMBER	REV	DESCRIPTION	DESCRIPTION 2	Qty
1	10028		SWITCH,AC HVIL	PLUNGER SWITCH	1
2	10029		CONTROLLER,AC COMPRESSOR	HV CONTROLLER AC COMPRESSOR	1
3	20008		HARNESS,SUB-SYSTEM,AC	AC SYSTEM HARNESS	1
4	20009		HARNESS,AC CONTROL, INTERNAL	AC SYSTEM CONTROLLER HARNESS	1
5	20177		CONNECTOR,8 PIN PANEL MNT	8 PIN BULKHEAD CONNECTOR	1
6	30083		BOLT,10-24X0.75"L	ZPS	12
7	30084		NUT,NYLOCK,10-24	ZPS	12
8	30085		WASHER,FLAT,#10	ZPS	24
9	30086		BOLT,4-40X1.0"L	ZPS	1
10	30088		BOLT,6-32X0.625"L	ZPS	2
11	30173		NUT,NYLOCK,#4-40,THIN	ZPS	2
12	40175	01	ENCLOSURE,A/C CNTRL,MODIFIED	A/C COMP CNTRLR ENCL,MIRRORED	1
13	50041		FITTING,LIQUIDTIGHT,90 DEG	3/4",METAL CONDUIT	1
14	50042		FITTING, LIQUIDTIGHT, STRAIGHT	3/4",METAL CONDUIT	1
15	60004		LABEL,DANGER HV EQUIP	ELEC EQUIP AUTHORIZED ENTRY	1
16	60005		LABEL,SHOCK HAZARD	ELECTRIC SHOCK HAZRD TRIANGLE	1



PROPRIETARY AND CONFIDENTIAL
 THE INFORMATION CONTAINED IN THIS DRAWING IS THE SOLE PROPERTY OF ODYNE SYSTEMS, LLC.
 REPRODUCTION IN PART OR AS A WHOLE WITHOUT THE WRITTEN PERMISSION OF ODYNE IS PROHIBITED.

UNLESS OTHERWISE SPECIFIED REFERENCE DIMENSIONS SHOWN IN PARENTHESIS DIMENSIONS ARE IN INCHES	DRAWN	AJC	09/11/12
	CHECKED	AJC	09/16/14
ANGULAR ± 1.0°	ENG APPR	AJC	9/16/2014
NOMINAL ± 0.050	MFG APPR	AJC	09/16/14
ONE PLACE DECIMAL ± 0.025	QA APPR		
TWO PLACE DECIMAL ± 0.010			
THREE PLACE DECIMAL ± 0.005			

MATERIAL: INTERPRET GEOMETRIC TOLERANCE PER ASME Y14.5M-1994

FINISH:

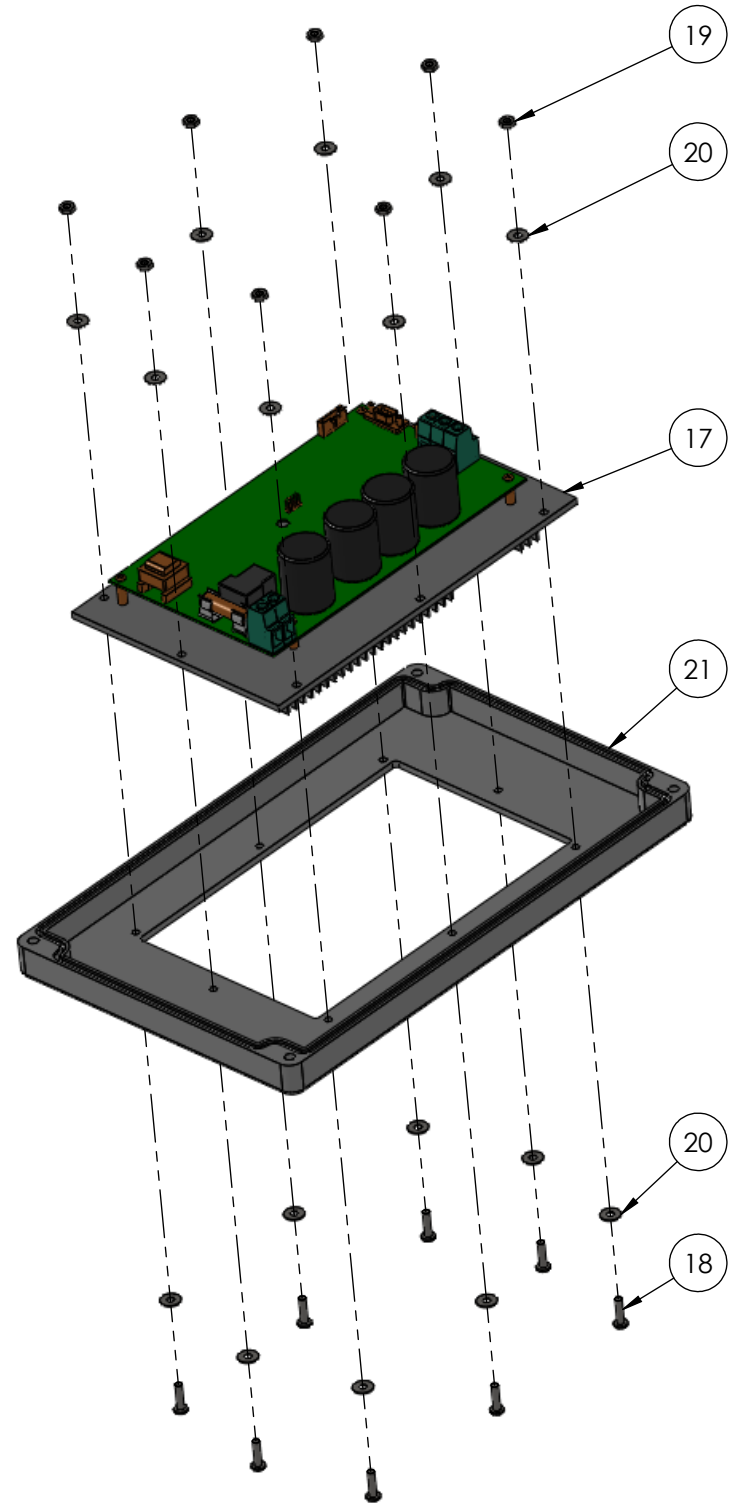
ODYNE
 www.odyne.com

**SUB-ASSY,AC COMP CONTROLLER
 MIRRORED CONFIGURATION**

SIZE B	PART NUMBER 70163	REV 03
SCALE 1:4	DO NOT SCALE DRAWING	SHEET 1 OF 4

REV	REVISION	DRAWN BY	APPROVAL	DATE
03	DELETED PART #30089, ADDED PART #30173, ADDED NOTE TO LOCTITE HVIL SWITCH BOLTS	AJC	AJC	09/16/14

ITEM	PART NUMBER	REV	DESCRIPTION	DESCRIPTION 2	Qty
17	10029		CONTROLLER,AC COMPRESSOR	HV CONTROLLER AC COMPRESSOR	1
18	30083		BOLT,10-24X0.75"L	ZPS	8
19	30084		NUT,NYLOCK,10-24	ZPS	8
20	30085		WASHER,FLAT,#10	ZPS	16
21	40175	01	ENCLOSURE,A/C CNTRL,MODIFIED	A/C COMP CNTRLR ENCL,MIRRORED	1



TORQUE VALUE	21 IN-LB
--------------	----------

PROPRIETARY AND CONFIDENTIAL
 THE INFORMATION CONTAINED IN THIS DRAWING IS THE SOLE PROPERTY OF ODYNE SYSTEMS, LLC.
 REPRODUCTION IN PART OR AS A WHOLE WITHOUT THE WRITTEN PERMISSION OF ODYNE IS PROHIBITED.

UNLESS OTHERWISE SPECIFIED REFERENCE DIMENSIONS SHOWN IN PARENTHESIS DIMENSIONS ARE IN INCHES	DRAWN	AJC	09/11/12
	CHECKED	AJC	09/16/14
ANGULAR ± 1.0°	ENG APPR	AJC	9/16/2014
NOMINAL ± 0.050	MFG APPR	AJC	09/16/14
ONE PLACE DECIMAL ± 0.025	QA APPR		
TWO PLACE DECIMAL ± 0.010			
THREE PLACE DECIMAL ± 0.005			
MATERIAL	INTERPRET GEOMETRIC TOLERANCE PER ASME Y14.5M-1994		
FINISH			

ODYNE

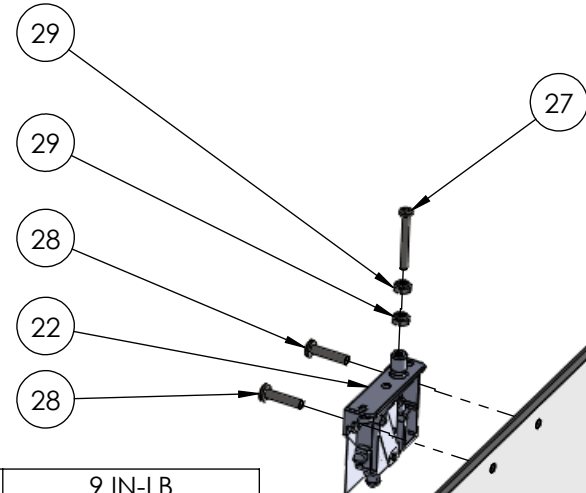
www.odyne.com

**SUB-ASSY,AC COMP CONTROLLER
MIRRORED CONFIGURATION**

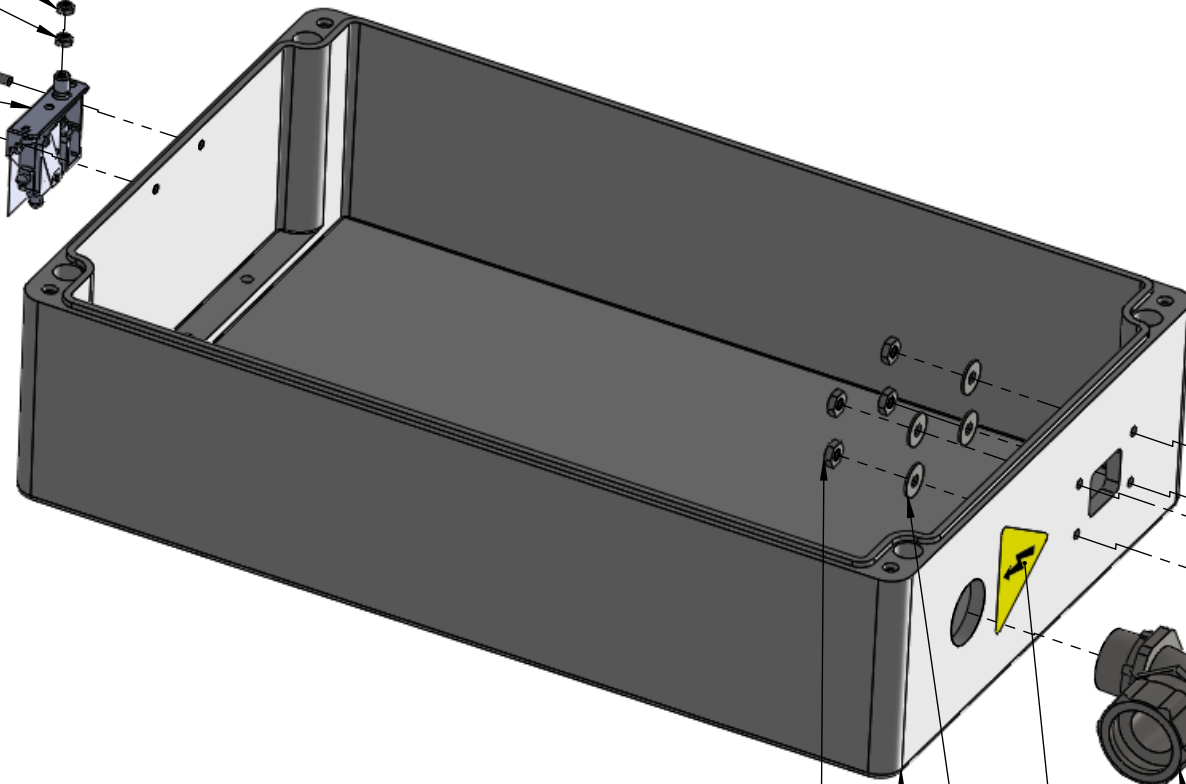
SIZE B	PART NUMBER 70163	REV 03
SCALE 1:5	DO NOT SCALE DRAWING	SHEET 2 OF 4

REV	REVISION	DRAWN BY	APPROVAL	DATE
03	DELETED PART #30089, ADDED PART #30173, ADDED NOTE TO LOCTITE HVIL SWITCH BOLTS	AJC	AJC	09/16/14

ITEM	PART NUMBER	REV	DESCRIPTION	DESCRIPTION 2	Qty
22	10028		SWITCH,AC HVIL	PLUNGER SWITCH	1
23	20177		CONNECTOR,8 PIN PANEL MNT	8 PIN BULKHEAD CONNECTOR	1
24	30083		BOLT,10-24X0.75"L	ZPS	4
25	30084		NUT,NYLOCK,10-24	ZPS	4
26	30085		WASHER,FLAT,#10	ZPS	8
27	30086		BOLT,4-40X1.0"L	ZPS	1
28	30088		BOLT,6-32X0.625"L	ZPS	2
29	30173		NUT,NYLOCK,#4-40,THIN	ZPS	2
30	40175	01	ENCLOSURE,A/C CNTRL,MODIFIED	A/C COMP CNTRLR ENCL,MIRRORED	1
31	50041		FITTING,LIQUIDTIGHT,90 DEG	3/4",METAL CONDUIT	1
32	50042		FITTING, LIQUIDTIGHT, STRAIGHT	3/4",METAL CONDUIT	1
33	60004		LABEL,DANGER HV EQUIP	ELEC EQUIP AUTHRIZED ENTRY	1
34	60005		LABEL,SHOCK HAZARD	ELECTRIC SHOCK HAZRD TRIANGLE	1



TORQUE VALUE	9 IN-LB
APPLY BLUE LOCTITE TO BOLT THREADS	



TORQUE VALUE	21 IN-LB
--------------	----------



PROPRIETARY AND CONFIDENTIAL
THE INFORMATION CONTAINED IN THIS DRAWING IS THE SOLE PROPERTY OF ODYNE SYSTEMS, LLC.
REPRODUCTION IN PART OR AS A WHOLE WITHOUT THE WRITTEN PERMISSION OF ODYNE IS PROHIBITED.

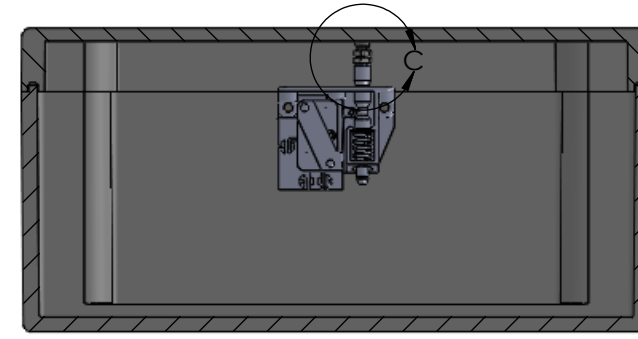
UNLESS OTHERWISE SPECIFIED REFERENCE DIMENSIONS SHOWN IN PARENTHESIS DIMENSIONS ARE IN INCHES	DRAWN	AJC	09/11/12
	CHECKED	AJC	09/16/14
ANGULAR ± 1.0°	ENG APPR	AJC	9/16/2014
NOMINAL ± 0.050	MFG APPR	AJC	09/16/14
ONE PLACE DECIMAL ± 0.025	QA APPR		
TWO PLACE DECIMAL ± 0.010			
THREE PLACE DECIMAL ± 0.005			
MATERIAL	INTERPRET GEOMETRIC TOLERANCE PER ASME Y14.5M-1994		
FINISH			



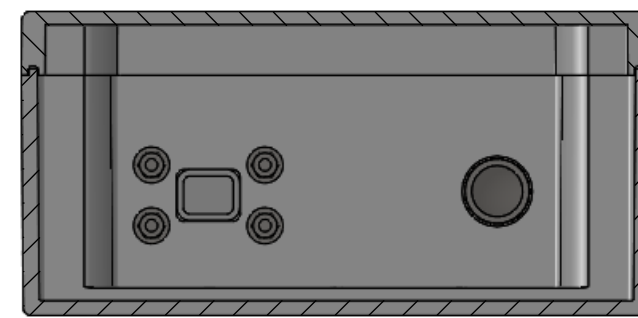
SUB-ASSY,AC COMP CONTROLLER
MIRRORED CONFIGURATION

SIZE B	PART NUMBER 70163	REV 03
SCALE 1:3	DO NOT SCALE DRAWING	SHEET 3 OF 4

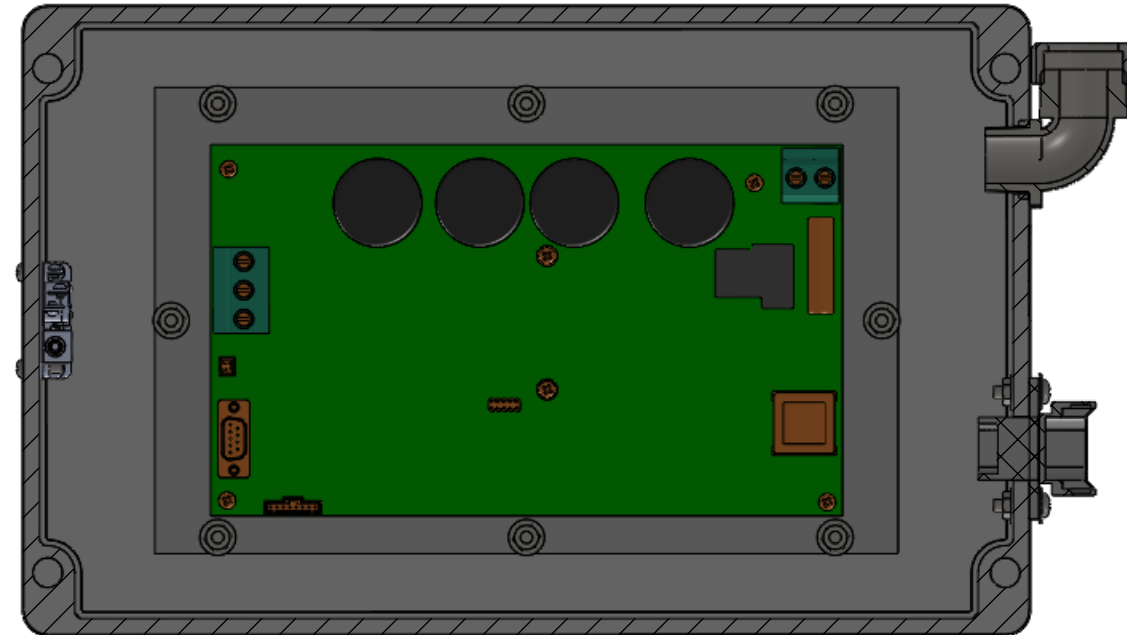
REV	REVISION	DRAWN BY	APPROVAL	DATE
03	DELETED PART #30089, ADDED PART #30173, ADDED NOTE TO LOCTITE HVIL SWITCH BOLTS	AJC	AJC	09/16/14



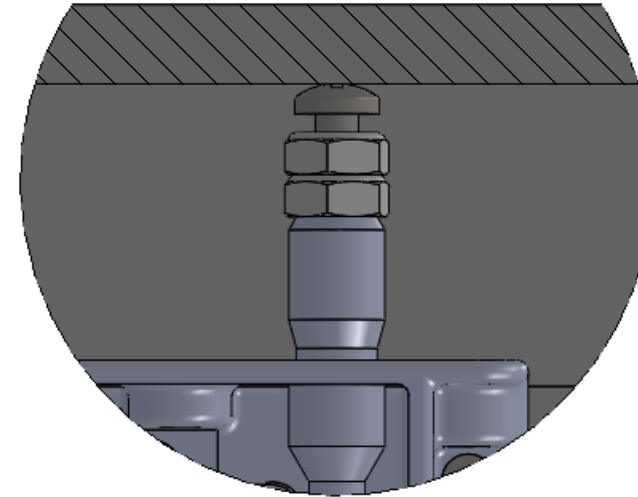
SECTION A-A



SECTION B-B



SECTION D-D



DETAIL C
SCALE 2 : 1

ADJUST SCREW SO THAT WHEN ENCLOSURE LID IS CLOSED THE SWITCH IS ENGAGED. LOCK THE SCREW POSITION BY TIGHTENING THE 2 NUTS AFTER PROPER HEIGHT IS DETERMINED.

PROPRIETARY AND CONFIDENTIAL
THE INFORMATION CONTAINED IN THIS DRAWING IS THE SOLE PROPERTY OF ODYNE SYSTEMS, LLC. REPRODUCTION IN PART OR AS A WHOLE WITHOUT THE WRITTEN PERMISSION OF ODYNE IS PROHIBITED.

UNLESS OTHERWISE SPECIFIED REFERENCE DIMENSIONS SHOWN IN PARENTHESIS DIMENSIONS ARE IN INCHES	DRAWN	AJC	09/11/12
	CHECKED	AJC	09/16/14
ANGULAR ± 1.0°	ENG APPR	AJC	9/16/2014
NOMINAL ± 0.050	MFG APPR	AJC	09/16/14
ONE PLACE DECIMAL ± 0.025	QA APPR		
TWO PLACE DECIMAL ± 0.010			
THREE PLACE DECIMAL ± 0.005			
MATERIAL	INTERPRET GEOMETRIC TOLERANCE PER ASME Y14.5M-1994		
FINISH			



SUB-ASSY, AC COMP CONTROLLER
MIRRORED CONFIGURATION

SIZE B	PART NUMBER 70163	REV 03
SCALE 1:3	DO NOT SCALE DRAWING	SHEET 4 OF 4